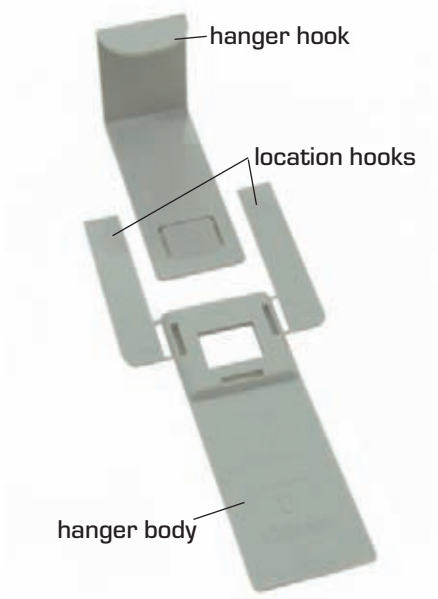
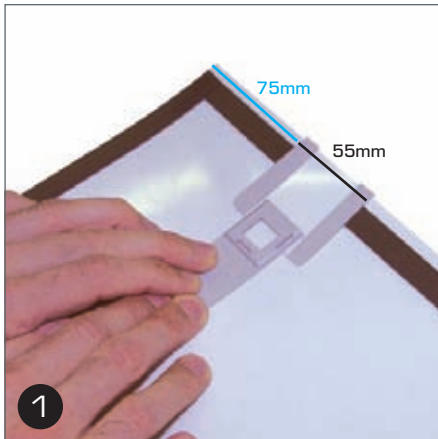


T3 HANGER

FITTING THE T3 HANGERS



The t-hook graphic hanger comes in two parts; the hanger body and the hanger hook.

- 1 When preparing the graphic panel, leave a 55mm gap in the magnetic tape, 75mm in from each side.

The hanger body is accurately positioned from the top of the panel by two location hooks.

Remove the backing from the adhesive tabs on the hanger body and place it adhesive-side down 75mm from the left side of the panel as shown.

Make sure the location hooks are aligned with the top edge of the graphic panel.

Press down hard on the hanger body to ensure good adhesion.

- 2 Break off the two location hooks.
- 3 Repeat the process with the second hanger body, 75mm in from the right-hand side of the graphic panel.
- 4 Insert the two hanger hooks into the hanger bodies ensuring the locating tabs click into place.
- 5 Place the panel onto your support structure to check alignment. Remove the hanger hooks for packing.

Patent Pending No.
GB 06 09 032.8

Registered Design Nos.
PCT/GB2007/001633
ED 524 970